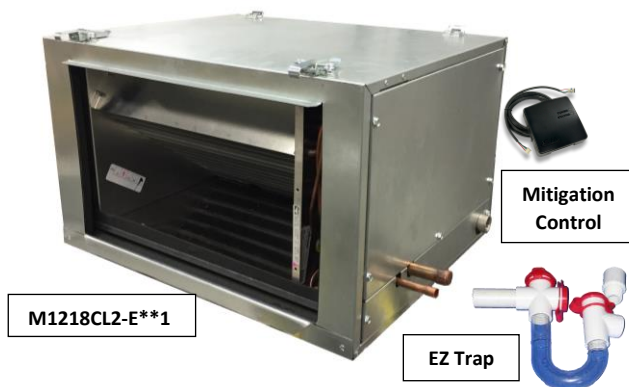


For: ☐ File ☐ Resubmit ☐ Approval ☐ Other _____

M1218CL*-E**1

1.5-ton SDHV Modular Refrigerant Heat Pump and Air-conditioning Coil

Job Name:	Location:
Date:	Tag #:
Architect:	Engineer:
Mechanical:	Distributor:
Rep:	
(Company)	(Project Manager)



Features

- Modular construction
- Multiple configurations
- Use as cooling only or heat pump
- Painted options available
- Enhanced Aluminum fins
- Copper tubes
- Stainless steel drain pan
- Includes:
 - EZ trap (shipped loose)
 - Anti-frost switch
 - R454B/R32 sensor and mitigation control

Matching Modules

M1218B**-EC*
M1218C**-H

Indoor Unit Size

1218

Operating Range:

Nominal Capacity	1 to 1.5-ton (3.5 to 5 kW)
Airflow Range	100 to 500 CFM (170 to-850 m³/h)

General Data:

Compatible Outdoor unit nominal capacity	1 to 1.5-ton (3.5 to 5 kW)
Rated performance	see AHRI directory*
Net coil face area	1.17 ft² (0.11 m²)
Tube diameter	3/8 in. (9.52 mm)
Number of rows	6
Fin density	15/in. (590/m)
Design pressure	500 psig (3.45 MPa)
Refrigerant type	R454B / R32
Suction line size	5/8 in. (15.88 mm) OD
Liquid line size	3/8 in. (9.52 mm) OD
Drain size	3/4" FPT
Net unit weight	52 lbs. (24 kg)
Shipping Weight	57 lbs. (26 kg)
Dimensions (H x W x D)	12 x 20 x 16.6 in. (305 x 514 x 421 mm)

* www.ahridirectory.org

Optional Accessories:

- ☐ Secondary drain pan (UPC-94)
- ☐ Return adapter (UPC-104-1218)
- ☐ R454B TXV (TXV-1T-454)
- ☐ R32 TXV (TXV-1T-32)
- ☐ Liquid line for ODU TXV (A02735-G02)

Notes:

1. All wiring and piping must comply with applicable local and national code.
2. Refer to installation manual for more information.
3. Refer to AHRI directory for compatible outdoor match and rated performance.
4. TXV is not included with A2L units

Model Number Key (available models):

M	1218	C	L	2	-	E	0	0	1
Model Series	Nominal Capacity	Module Type	Configuration	Revision		Style	Paint Options	Coil Coating	Refrigerant Type
M = Modular	1218 = 12000 to 18000 Btu/hr	C = Coil	L = Left	1 = Flare TXV 2 = Chatteff TXV		E = 6 rows	0 = No paint 1 = Paint White T = Technicote	0 = No coating C = E-Coated	1 = A2L

M1218CL*-E**1

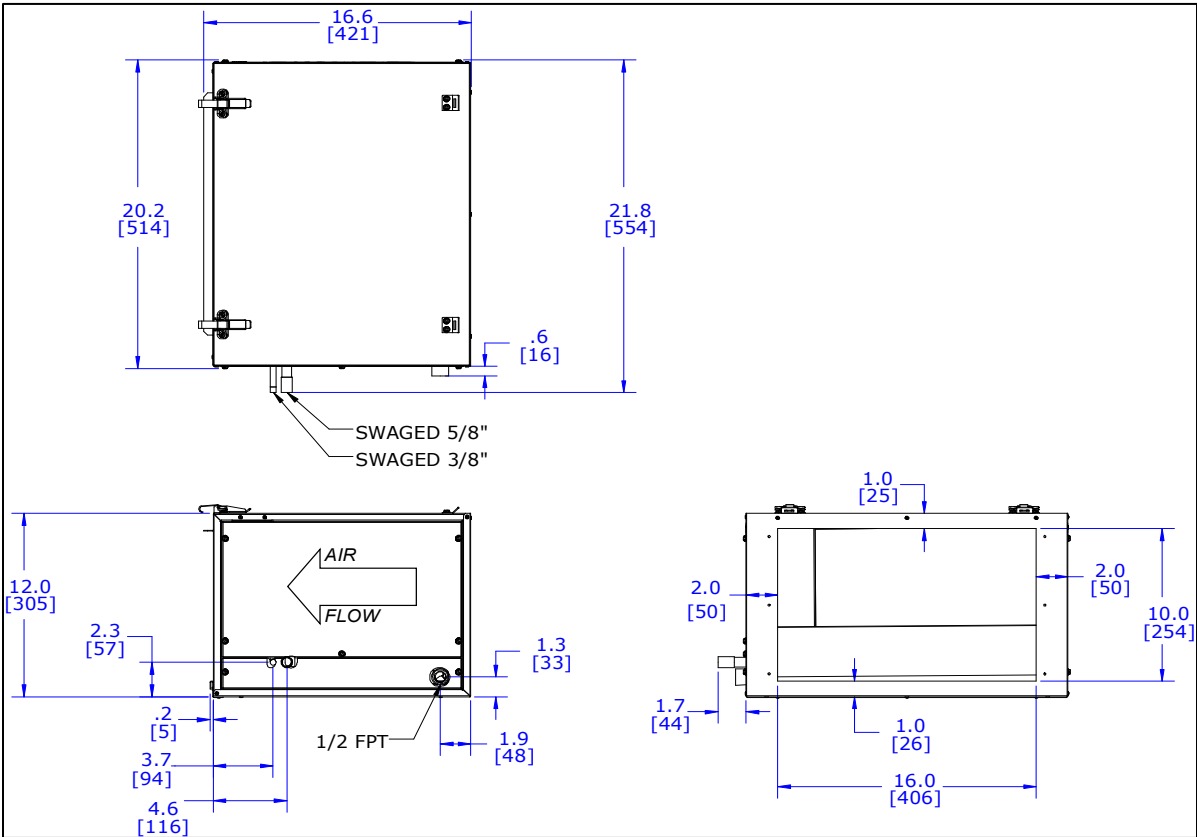
Job Name:

Location:

Date:

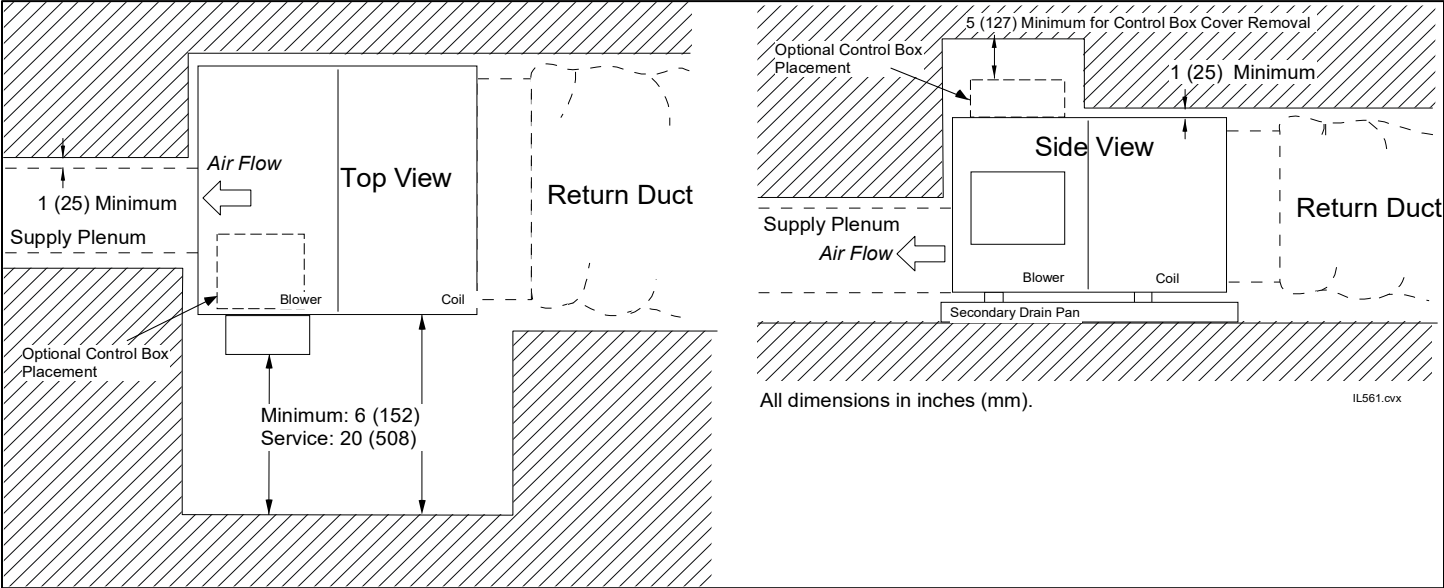
Tag #:

REFRIGERANT COIL MODULE DIMENSIONS (LEFT HAND)



* Contact Unico for dimensions of assembled modules or for right hand dimensions

Installation Clearances



Unico, Inc.
<http://unicosystem.com>
314-481-9000
800-527-0896
sales@unicosystem.com

CE

UKCA

ETL

LISTED

US

Intertek

AHRI

CERTIFIED

www.ahrirectory.org

Variable Refrigerant Flow (VRF) Multi-Split AC and HP
AHRI Standard 1230

AHRI

CERTIFIED

www.ahrirectory.org

Utility Small HP
AHRI Standard 210/240
Certification applies only when the complete system is tested with VRF.